



ASHRAE

Advancing HVAC&R to serve humanity
and promote a sustainable world

The Rebel

THE OFFICIAL NEWSLETTER OF THE ASHRAE SOUTHERN PIEDMONT CHAPTER

April

2009

In This Issue

MAY 7th LUNCH MEETING

President's Message

Programs

Research Promotion

Technology Transfer

Student Activities

Membership

YEA

Announcements

MAY LUNCH MEETING

May 7th, 2009

**ASHRAE Standard
189.1 for High
Performance Green
Buildings**

w/

**Dr. Thomas M.
Lawrence
University of Georgia**

11:30am-1:30pm

President's Message

[Todd Horton \(Johnson Controls\)](#)



Our ASHRAE year is quickly drawing to a close. We have one last meeting with a technical emphasis. **Dr. Tom Lawrence**, who some of you may remember from the Blowing Rock CRC, will be with us. He will be speaking on a new ASHRAE standard that is in the works. Please see Jerry's section on programs to learn more. The board also has an idea or two we are working on, for a social event sometime in late May or early June. As details are finalized, we will let you know.

As many of you know the chapter leadership attends CRC (Chapter's Regional Conference) each year, typically in August. This year Region IV is combining with Region XII to host the Carolina's, Georgia, Florida, and Central and South American chapters in one large CRC. The event will be in **St. Pete Beach, Florida** and presents an excellent time to combine a great opportunity for a family vacation, as well as fellowship with other professionals in our industry with many different backgrounds and experiences.

If you are interested in attending or would like to be an event sponsor, please visit the following website:

<http://ashraecrc2009-region4-12.org/page8.php>

As always, we are looking for new or familiar faces to help us serve the membership, please contact myself or any of

Byron's Southend

Design Center of the Carolinas
- Courtyard

101 W. Worthington Avenue,
Suite 110 Charlotte, NC 28203

[Click for MAP](#)

RSVP ONLINE

(Registration using PayPal is available online, or you can [RSVP by email to Jerry McAuliffe, \[jmcauliffe@ecmdi.com\]\(mailto:jmcauliffe@ecmdi.com\)](#))
(\$20/person)

SCHEDULE 2008-2009

June 4 - Lunch/Social - TBD

2009 Regional Chapters Conference brings us to Florida!!!



This August, the Florida Western Chapter will be hosting the Chapters Region Conference for two regions - Region IV and XII. This will be quite the event. ASHRAE members and Society dignitaries will come from all over Florida, Georgia, North Carolina, South Carolina, Puerto Rico, Argentina, Brazil and other areas of Central and South America.

This CRC is earlier in August

the other board members. Contact me at Todd.Horton@jci.com with any questions.

Programs

[Jerry McAuliffe \(East Coast\)](#)



ASHRAE has developed a new standard for **High Performance, Green Buildings (Standard 189.1)**. This standard is scheduled for **implementation in January, 2010**. The meeting will provide a detailed look at the standard, the background on its development and how it is foreseen that it may be applied and adopted.

Dr. Thomas M. Lawrence is a Public Service Associate with the University of Georgia, and has over 25 years of professional experience in engineering and environmentally related fields. Before going back for his Ph.D. in Mechanical Engineering at Purdue, he spent approximately 20 of those years in progressively more responsible engineering and management positions in industry and consulting. He took over as Chair of ASHRAE Technical Committee 2.8, "Building Environmental Impact and Sustainability", in July of 2008 and is a member of the Special Project Committee 189 writing the ASHRAE standard on high-performance green buildings.

Make plans to join us for our last meeting of this fiscal year. The meeting will be on **Thursday, May 7th, 2009, at Byron's Southend**. Registration starts at 11:30am and the program at 12 noon.

RSVP to Jerry McAuliffe at (office) 704-599-0097 x106, (cell) 704-607-6041 or e-mail jmcauliffe@ecmdi.com.

Research Promotion

[Neil Poissant \(Adams Companies Inc.\)](#)



Spring golfing was awesome!!!

Thanks to all our sponsors and golfers for coming out for

than usual, before most schools start, so bring the family.

CRC 2009 will take place August 6-8, 2009, FWC and the Atlanta chapter will be hosting events throughout the week including fishing charter, golf scramble, technical seminars and much more.

The conference will be held at the ***Tradewinds Beach Resort in lovely St. Pete Beach.***

For Sponsorships, Attendee Registration or to Volunteer, please feel free to contact Pam Immekus at 770-419-7533 (pimmekus@sunbeltegi.com) for more details.

an enjoyable day of fun for research!



Technology Transfer

[Gary Wilson \(UNC-Charlotte\)](#)



ASHRAE Provides Federal Recovery Act Resources

ATLANTA - With U.S. economic recovery stimulus funds coming down the pipeline, state and local governments have a once-in-a-lifetime opportunity to upgrade and modernize the nation's infrastructure.

To encourage investment in projects with the greatest long-term impact, ASHRAE has put together resources to help its members engage decision-makers in identifying and planning projects in their areas. Two resource packages related to recovery funding and energy efficiency in schools are being distributed to ASHRAE's 124 chapters in the United States, encompassing some 35,000 members. The packages and supporting information can be found at www.ashrae.org/recovery.

"The American Recovery and Reinvestment Act provides significant funding to federal agencies and state and local governments for the improvement of government-owned infrastructure," Bill Harrison, ASHRAE president, said. "ASHRAE members have the

knowledge, experience and resources to assist state and local governments in determining projects with the greatest value and return on investment."

An ***ASHRAE Member's Guide to Recovery Funding*** provides information on the American Recovery and Reinvestment Act, areas of funding, resources available and tips for engaging state and local decision makers.

Energy Efficiency in Schools, Smart Investments of Recovery Funding provides information targeted to school administrators and state recovery fund managers to encourage investment in energy efficient schools.

(article from ASHRAE Press Release)

Student Activities

[Eric Titler](#)



Get Engaged at Discovery Place's New Labs

For the first time in its 27-year history, Discovery Place is undergoing a major renovation that will fill the Museum with all new interactive exhibits and activities presenting science in a contemporary way. The Museum, one of the top hands-on science centers in the country and one of the best-loved institutions in Charlotte, will begin unveiling new areas and exhibitions in late 2009 and will continue to introduce new programs throughout the first half of 2010.

The "new" Discovery Place will include three innovative public lab spaces where visitors will explore major concepts in science through open ended, dynamic scientific inquiry. ***The Museum is seeking content experts to collaborate on the development of programming and to act as facilitators when the labs open to the public.***

One of the labs focuses on the secrets of 'Stuff'. This lab is a unique place where matter and energy are explored and tested. In an environment that is facilitated by experts, kids and adults alike will have a chance to experiment with

forces controlled by the laws of physics and chemistry. Programming will be created and supported by partnerships with educational institutions, science, technology, engineering and math (STEM) businesses and individuals. ***Partners will provide expertise in program development, technical support and in interaction with Museum guests.***

If you are interested in learning more or getting involved with this unique effort to get adults and kids of all ages engaged in scientific thought and activity, please contact [Mary Bures with Discovery place at maryb@discoveryplace.org](mailto:maryb@discoveryplace.org) or **704.372.6261 x441**. The time commitment is flexible, Discovery Place will work with you to customize a schedule.

Discovery Place thanks you for your considering the sharing of your time, expertise, talent and energy to make such extraordinary experiences available to our community.

Membership

[Bill Brown \(Allied Engineers\)](#)



Why become a member? ASHRAE membership provides direct access into the Society's HVAC&R technical library of knowledge that is continually updated and expanded. Rooted in the Handbook, this knowledge base extends into cutting edge research papers and technical discussions published in the ASHRAE Journal and other Society periodicals. How do you keep up to date with changes in the industry? Where did you read about the details of a new integrated refrigeration control system strategy? Where did you see an advertisement for a new type of air quality sensor that's exactly what you need for a job you're bidding out next week? You probably read it in an ASHRAE publication...just part of your ASHRAE Membership experience.

*** Important New Membership Policies ***

1. ASHRAE is no longer accepting applications for grade advancement. To advance from associate to member, a member must update their ASHRAE bio online, and notify

membership@ashrae.org they have an updated bio and wish to be considered for grade advancement.

Tips for updating bios:

- i. Go to www.ashrae.org
- ii. Login
- iii. In Member Central, Click "Update Your Bio"
- iv. Go through each of the small blue tabs to enter demographics, contact information, education, professional registration, etc. It's very easy!

2. Effective July 1, 2009, the Affiliate grade dues will be increased to \$50 annually for new Affiliate members, \$70 annually for second year Affiliate members, and \$90 annually for third year Affiliate members. Upon the fourth year, they advance to Associate as they have in the past. Although Society will notify Affiliates of this change, please also take a moment to notify them when you communicate with them. This dues increase is a result of the cost to provide services and cost of benefits.

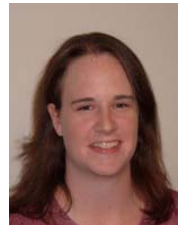
For a PDF membership application you can print out, fill out, then mail or fax to ASHRAE, please visit www.spashrae.com/pdf/ASHRAE_application0707.pdf. Please Include the following with/on your application:

1. Please state your intention to participate in the Southern Piedmont Chapter.
2. National membership dues are \$165...please include an additional \$30 for Chapter dues...total=\$195.

We look forward to having you all on board!!!

YEA (Young Engineers in ASHRAE)

[Tracie Monfort \(HESM&A\)](mailto:Tracie.Monfort@hesm.com)



Email tracie.monfort@hesm.com if you are interested in helping out with YEA efforts.

Announcements

ASHRAE Seeks Applicants for Department of Energy Fellowship

ATLANTA - ASHRAE members looking to assist with national energy code deployment and compliance can apply to a new fellowship being sponsored by the American Society of Heating, Refrigerating and Air-Conditioning Engineers.

ASHRAE is seeking members to apply for a fellowship with the Department of Energy. The selected person would be placed in the DOE's Office of Building Technologies, Building Energy Codes Program. The fellowship would last from 12 to 18 months, depending on the office's needs and the qualifications of the applicant.

"This fellowship will give an engineer or scientist with a unique opportunity to participate directly in the policy implementation process, all while providing a valuable public service," says Doug Read, ASHRAE's program director of government affairs. "This enriching experience will enable the Fellow to bring back to their employers an insider's perspective on government decision-making that can contribute significantly to the mission and vision of the organization."

The placed individual will work in one of the following areas:

Code compliance, working to establish three compatible template processes and procedures for state evaluation of state code compliance.

Residential duct test training, including preparing training materials for the new duct testing requirements in the 2009 IECC, including strategic options for practical code enforcement and compliance.

Assessment of the impact of updating state energy codes, including preparing reports of the impact of updating state building energy code to meet Standard 90.1-2010 based on EnergyPlus analysis of benchmark buildings and cost databases.

Advanced energy code training, including prepare training materials for six areas of advanced commercial building energy code training to assist designers to meet, and code officials to inspect.

The successful applicant will be expected to participate in Building Technologies Program staff meetings, Building Energy Codes monthly deployment meetings the Energy Codes National Workshops, and the building energy Codes Program review.

A minimum stipend of \$50,000 per year will be provided. ASHRAE members interested in the position can **contact Doug Read at (202) 833-1830** or dread@ashrae.org. Applications are now being accepted and will be reviewed on a rolling basis.

Email ddmcgarry@refresco-plc.com to add announcements, job postings, etc. in future newsletters...